

Splitware Mobility Platform

Smart Mobility for ServiceNow Asset Management

With your investment in ServiceNow IT management applications, you are now utilizing visionary, cloud-based ITSM tools to better track what's going on within your IT Department. Incidents, problems and changes have never been more easily communicated and resolved. Discoverable assets are accounted for and clearly visible.

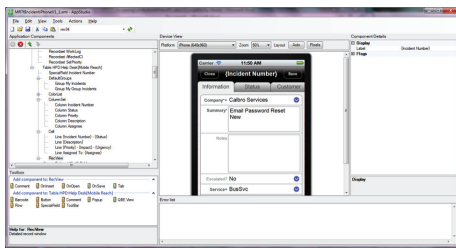


However, for tracking non-discoverable assets, receiving new assets, and performing full inventories, your mobile technicians need both immediate access to CMDB records and the ability to create new records from the field.

The smart choice for empowering mobile techs and other mobile users of ServiceNow is the Splitware Mobility Platform. This complete mobility solution allows you to rapidly build and deploy mobile applications that securely connect to ServiceNow. Utilize barcode scanning with smartphones, tablets, or mobile computers to populate and maintain your CMDB in real-time, error-free.

Splitware Mobility Platform Components:

- Splitware Gateway
- Splitware AppStudio
- Splitware AppStore
- Splitware AppSuite



Splitware AppStudio

Native Mobile Apps



Business Benefits

- Utilize barcode / RFID scanning to quickly capture asset information within ServiceNow
- Enable real-time updates to the ServiceNow CMDB
- Enable faster resolution and MTTR to allow the asset to be more productive
- Enhance decision making through dramatically increased data integrity
- Enable more accurate reporting and forecasting
- Improved ITIL, Sarbanes-Oxley, or other regulatory policy adherence

ServiceNow Asset Mobile Use Cases

Asset Receiving

- Create asset records in your CMDB right at your receiving location, as soon as they arrive
- Update Purchase Order module with receipt information
- Affix and associate asset tags to your real assets

Asset Inventory

- Reduce the amount of time and resource required to perform wall-to-wall inventory
- Use asset tagging and barcode scanning to improve the accuracy of inventory

Asset Lifecycle and Move / Add / Change Support

- Process daily asset status changes as they occur
- Track asset transfers instantly to maintain ownership, accountability info

